



Manual

Flugplatz **Birrfeld** professional

For Prepar P3D V4

Content

Introduction 3

Minimum system requirements 3

Installation 3

Uninstall 3

Compatibility 3

Important information and instructions 4

Here we go! 4

Special features of the scenery 4

Information about the airfield 5

Problem assistance 5

Outlook on other products 5

Design 5

Approach Chart 6

Introduction

Switzerland is a unique country. Especially - not only because of its multicultural nature, but also because of its interesting landscape. In Switzerland you will find many airports and airfields, be it in the snowy and high-lying Engadin or in the flat Mittelland. As soon as you have flown a few miles, you already discover the next airfield.

Flying over Switzerland not only has the beauty of discovering and seeing the wonderful landscape, but also the unique challenge to land on exceptionally located airfields. Including airfields that have a long and interesting history.

Welcome to the airfield Birrfeld, a pulsating airfield in the Swiss Plateau. The new implementation in P3D by Toni Schönenberger now offers you the opportunity to fly to this airfield with its challenging course round in its own flight simulator. We wish you a lot of fun and nice experiences with this product!

Minimum system requirements

Lockheed Martin - Prepar3D V4
Microsoft Windows 7 / 8 / 10 (64bit)
Processor: Quad-Core with 3,5 GHz
Memory: 16 GB DDR4-RAM (2666 MHz)
Videocard: 4 GB VRAM (DirectX 11)
Download-Size: 120 MB

Installation

Unzip the download and start the Setup.exe.

After the installation routine has started, select your desired language in which the installation is to be carried out. Then enter the serial code with hyphens.

Note upper and lower case. Then the setup routine starts to install the sceneries and activates them afterwards. Wait a few seconds at the end until the sceneries are logged in.

The next time the flight simulator is restarted, the load time will be a little longer as the flight simulator needs to detect the new sceneries.

Uninstallation

For WIN 7,8,10: Under "Start" "Control Panel" "Programs and Functions" "FLYLOGIC's Airport uninstall Birrfeld P3D V4".

Compatibiliy

The "Birrfeld airfield" was adapted to Prepar 3D V4. It is adapted **also** to the scene add-on "Switzerland professional P3D V4". This product was published by Mailsoft / Flylogic and covers the whole of Switzerland with high-resolution photo textures and a detailed landscape grid (mesh). Thanks to this add-on, it is possible to carry out flights in Switzerland under visual flight rules with an incredibly high recognition value. "Switzerland professional P3D V4" is the ideal complement to the "Birrfeld airfield" and together, the two products reach a representation of Switzerland, in a previously unknown level of realism.

Important information and instructions

The approach procedures and printed approach charts described in this manual may ONLY BE USED IN THE FLYING SIMULATOR AND SHOULD NOT BE USED FOR THE DESIGNATION AND IMPLEMENTATION OF GENERAL FLIGHTS.

Here we go!

You will now find the airfield in the airport selection menu under "LSZF".

Special features of the scenery

When creating the scenery, the designers Jeffrey Stähli and Toni Schönenberger not only focused on the airfield itself, but also modeled the surrounding area. He was able to optimally capture the special charm and uniqueness and implement it in the flight simulator for you.

On discovery trips over the small but fine area of the airfield, you can discover so many details and peculiarities. To help you find them, here's a short list of the highlights of the "Birmfeld P3D V4 airfield":

- All 3d models with high-resolution photo textures
- High-resolution seasonal background textures for summer and winter
- Very accurate building models with countless details
- Animated road traffic on the highway and the side roads
- Trees in the airfield environment with seasonal textures
- Countless site-specific 3d objects in the course area area such as the industrial area in the west to make the approach and departure more realistic
- Night lighting in the restaurant and some windows and dynamic light on headlights

Information about the airfield

With its close proximity to Zurich and Aargau, the Birrfeld airfield is one of the most important players in "General Aviation" in Switzerland. Stuck between the A1 and the A3 you will find the airfield Birrfeld with the ICAO code LSZF, just west of the city of Baden and south of Brugg. Located at 1300ft above sea level, it has a 690m long east-west runway (08 and 26), as well as a parallel grass runway with the same orientation and dimension.

The airfield Birrfeld is an uncontrolled airfield, which is due to its restrictive course round demanding. It is home exclusively to aircraft of the Kleinaviatik, which are used primarily in the hobby aviation and in the basic training. So certainly one or the other career pilot career has begun in LSZF. As a special highlight certainly the completely restored and stationed in Birrfeld Antonov-2 of the Antonov Club Avianna be designated. The largest single-engined biplane in the world carries out regular passenger flights.

More information on the airfield can be found at www.birrfeld.ch and on Antonov-2 at <http://www.avianna.ch>

Problem Remedy

Support is guaranteed at any time by written mail. We are happy to answer your questions and problems.

Outlook for more products

FLYLOGIC Software is home to numerous other retail products, including numerous other airfields in Switzerland, united in the "Small Airports of Switzerland" series. A selection of other products can be found at www.flylogicsoftware.com or www.mailsoft.com.

We look forward to welcoming you back on board soon and wish you unforgettable flights with the "Birmfeld P3D V4 airfield".

Design

Szenery designer:	Toni Schönenberger, Jeffrey Stähli
Manual:	Sales Wick, Alex Brander
Publishing:	FLYLOGIC - Software, Pfäffikon ZH Schweiz

All rights reserved, reprinting and retransmission only with written consent. All trademarks and / or logos mentioned or displayed are the property of their respective owners and are for the sole purpose of identifying or presenting reality.

Orthofotos " Data of the Canton of Aargau"

Approach chart

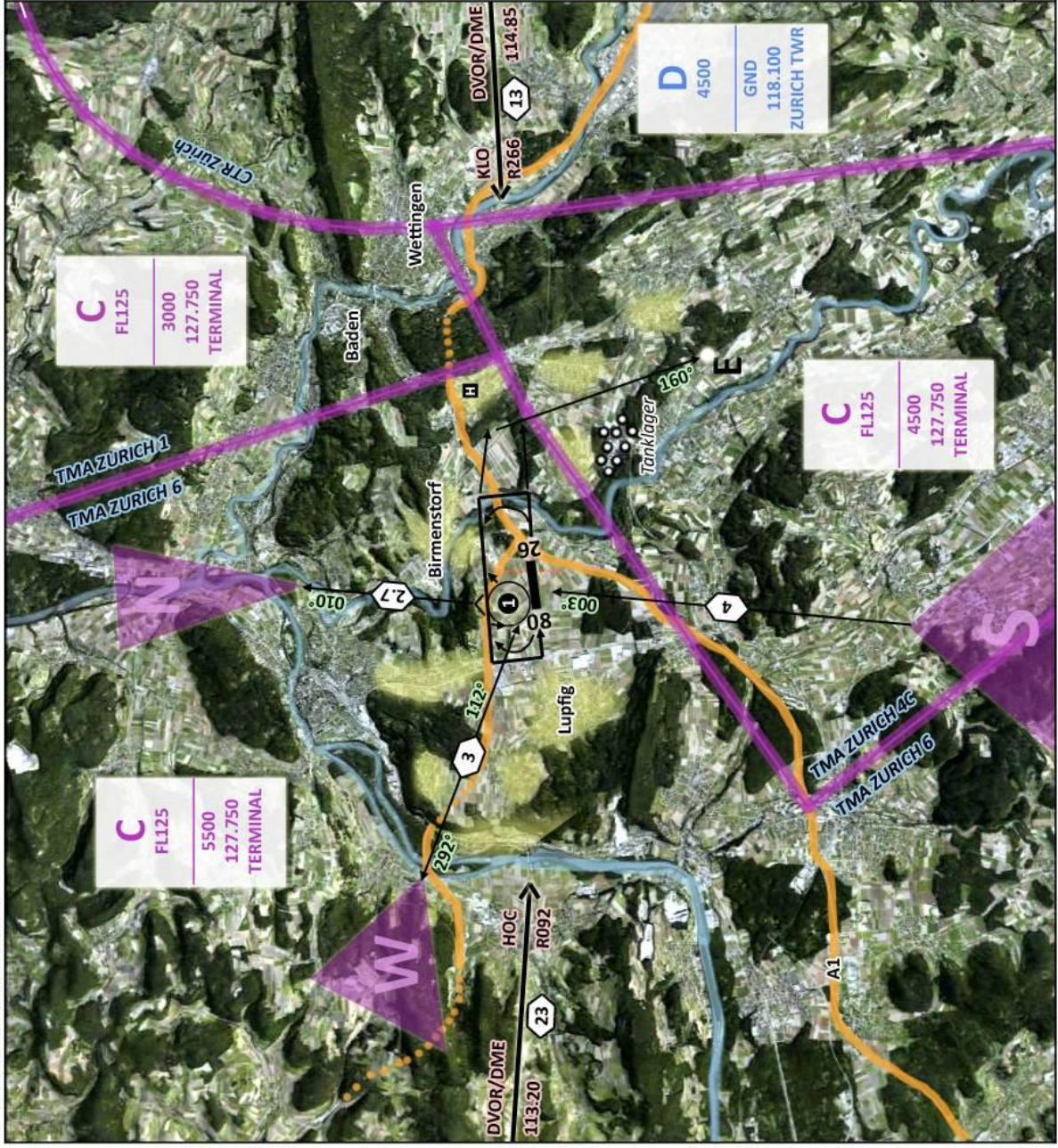
On the following page you will find the approach chart for viewing or printing.

SICHTANFLUGKARTE
VISUAL APPROACH CHART

ELEV: 1299ft (396m)

BIRRFELD
LSZF

AFIS 123.550



Positionsmeldung bei Einflug in die Sektoren:
WEST, NORD, SÜD

ANFLUG:
Bevorzugte Anflugsektoren:
WEST und NORD
Minimum: 4000ft
Überflug der Pistenachse
Minimum: 3000ft
Lärmempfindliche Gebiete

1 Alle Einflüge via Einflygkreis N THR RWY 08
2500ft

ABFLUG:
WEST, NORD, OST
↑

RWY	m	LDG	TKOF	Oberfläche
08 / 26	690 x 20	600	690	Asphalt
08 / 26	690 x 20	690	600	Grass

Höhen über Meer in ft.