

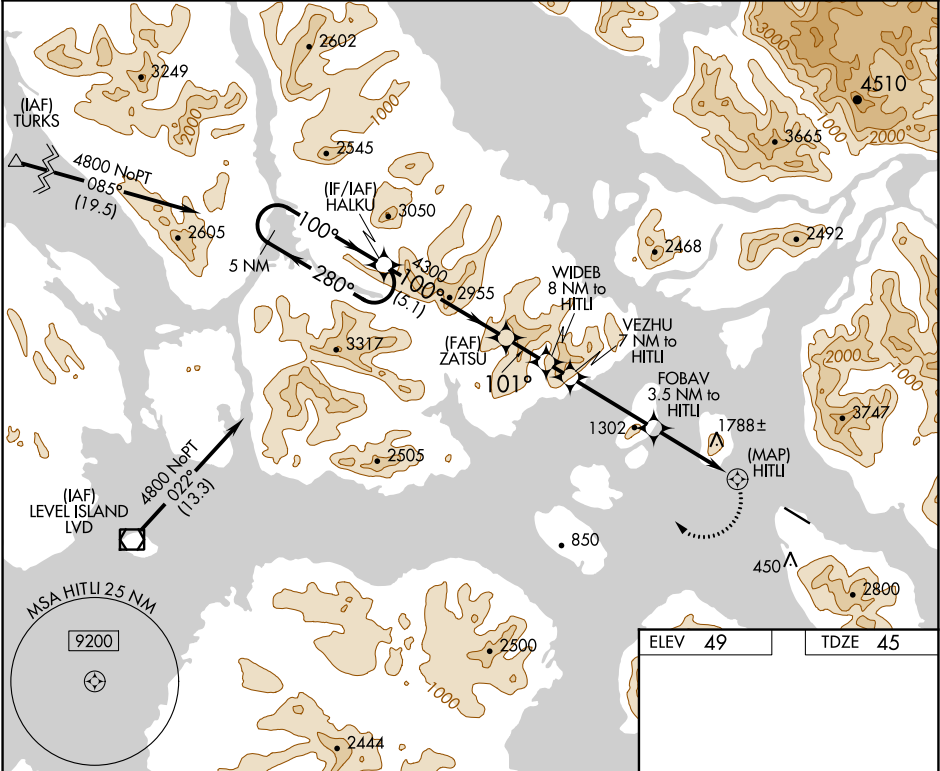
APP CRS	Rwy Idg	6000
101°	TDZE	45
	Apt Elev	49

RNAV (GPS) RWY 10

WRANGELL (WRG) (PAWG)

<div><div>▼</div><div>▲</div><div>☼</div></div> <div><div>Circling NA South of Rwy 10-28.</div><div>DME/DME RNP 0.3 NA.</div><div>Procedure NA at night.</div></div>	<div>MISSED APPROACH:</div> <div>Climbing right turn to 4800</div> <div>direct HALKU and hold.</div>
--	--

AWOS-3P	ANCHORAGE CENTER	SITKA RADIO	CTAF
128.5	118.0	122.45	122.6



5 NM Holding Pattern		HALKU	ZATSU	WIDE B 8 NM to HITLI	VEZHU 7 NM to HITLI	FOBAY 3.5 NM to HITLI	HITLI
4800 ← 280°		100° →	100°	4300	3780	3400	2120
VGSI and descent angles not coincident (VGSI Angle 3.00/TCH 52).		3.49°	TCH 52	1.7 NM	1 NM	3.5 NM	3.5 NM
← 5.1 NM →		1.7 NM	1 NM	3.5 NM	3.5 NM	2 NM	
CATEGORY	A	B	C	D			
RNAV MDA	2080-2½	2035 (2100-2½)	2080-3	2035 (2100-3)	NA		
CIRCLING	2080-2½	2031 (2100-2½)	2500-3	2451 (2500-3)	NA		

ELEV 49

TDZE 45

0.3% UP

6000 X 1.50

321

182

136

REIL Rwys 10 and 28

HIRL Rwy 10-28