

Add-On Scenery for Microsoft Flight Simulator **X** and **PREPARED**

AUSTRIA **HD**

Professional

WEST



User Manual



FLUGWERK
design



We would like to thank Johannes Kimla for his tremendous support during the development of this product.

Many thanks for Winfried Diekmann and his team from Aerosoft as well.

Copyright:

© 1998-2017 Flugwerk Design
Hochmayrstrasse
A-2384 Breitenfurt
Austria

E-Mail: office@flugwerk.at
Internet: www.flugwerk.at

© 2017 / Aerosoft GmbH
Airport Paderborn/Lippstadt
D-33142 Buren, Deutschland

Tel: +49 (0) 29 55 / 76 03-10
Fax: +49 (0) 29 55 / 76 03-33

E-Mail: info@aerosoft.de
Internet: www.aerosoft.com

This product as well as its containing parts may only be used for entertainment with Microsoft flight simulator or Lockheed Martin's Prepar3D.

This product may only be used for training or similar aviation-related, commercial purpose with written consent.

This product may be used on one computer only. If you'd like to use more than one copy of this product simultaneously you need to buy further copies.

Other usage than described is permitted with written consent only.

The Flugwerk is not responsible for damages to your PC or data caused by using this product.



Austria Professional HD West

Manual

Add-on for

Microsoft Flight Simulator X
and
Prepar3D



Content

The product 5

Installation..... 6

Compatibility 15



The product

Austria Professional HD is scenery addon for Microsoft Flightsimulator X and Lockheed Martin's Prepar3D. It needs a valid installation of either flightsimulator to run.

Austria Professional HD enhances your flightsimulator by textures, scenery and mesh data.

Some highlights:

- Part 2 covers the western part of Austria from the 14th degree of longitude (approximately between the cities of Linz and Wels)
- Detailed mesh with a resolution of approx. 5 meters
- Customized aerial photographs with a resolution of approx. 1 meter per pixel and summer textures only (other seasons are not covered)
- Important landmarks / monuments are recreated (like power lines, radio towers, windmills, radar stations and such)
- Comprehensive coverage with vegetation and generic buildings (autogen)
- All Austrian airfields are visible on the aerial photographs



Installation

Welcome to the installation of Austria Professional HD for Microsoft Flightsimulator X and Lockheed Martin's Prepar3D.

Please put the first installation disk labeled „Austria Professional HD Disk 1“ in your disk drive. The installation routine will start automatically.

In case auto-start should be disabled on your computer please click on the start button and select ‚Run‘. Enter X:\Setup and hit enter – please use the correct designator for your disk drive instead of the ‚X‘.

In case you have a downloaded product just click the file ATPSetup after extraction of your downloaded archive.



The setup routine will start and offer several language options. Please select your preferred language for the installation routine. Then click on ‚next‘.



Afterwards the installation routine opens a welcome screen. Click ‚next‘ to start the installation or click ‚exit‘ to abort the installation.

If you continue the installation routine displays the detected flight-simulator instances for which Austria Professional HD may be installed.

Please select the flightsimulator you'd like to install the scenery for and click ‚next‘.



Hint: If you'd like to install the scenery for multiple flightsimulator instances please restart the installation routine and select the remaining flightsimulator instances in this step.

You may use the same folder so that the flightsimulator instances share the same folder and files.



You need to enter the license key which is printed on the disk cover after you accepted the license terms.



Please enter the license key exactly the way it is printed on the disk cover.

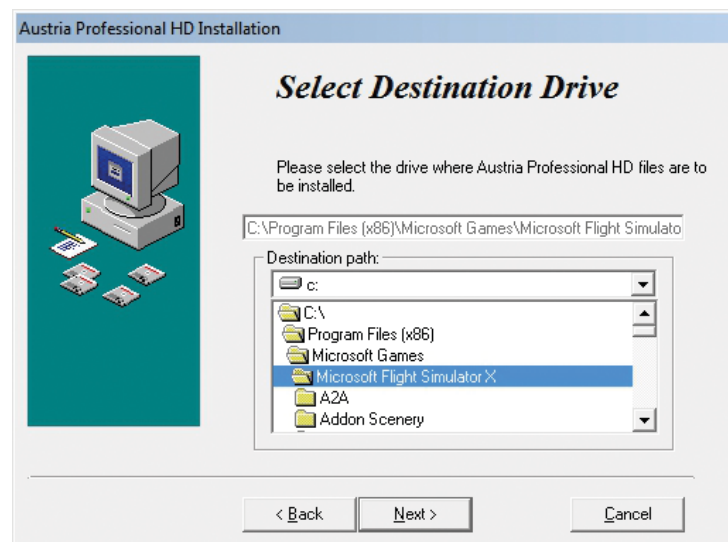
ADVICE: As you need the license key during each new installation please make sure to store it safely. You may need the license key for updates and product registration as well.

Please consider to write it into the manual.

CD-Key

Then, please click 'next'.

Now you may select the folder into which the scenery files are about to be installed. We recommend to accept the suggested folder. Please click ,next'.

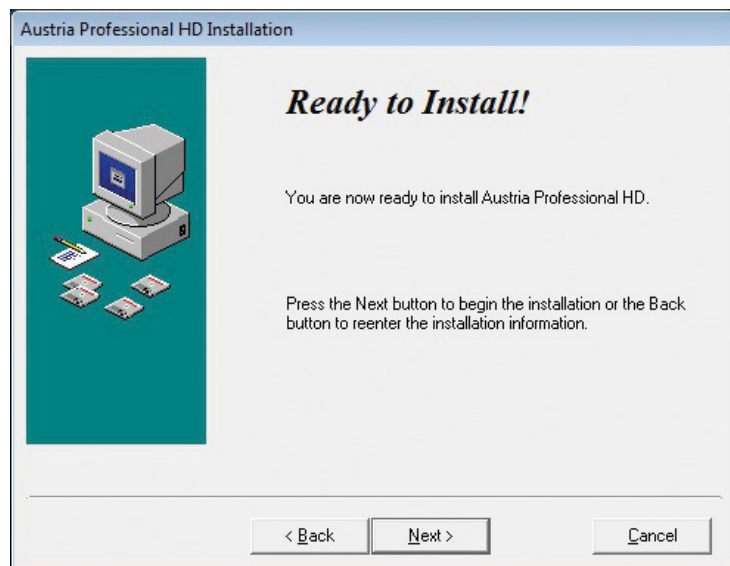


ATTENTION: Users of AUSTRIA Professional HD East

If AUSTRIA Professional HD is already installed on your computer, the files will be installed in the existing folder. In that case selection of the destination folder is not possible.

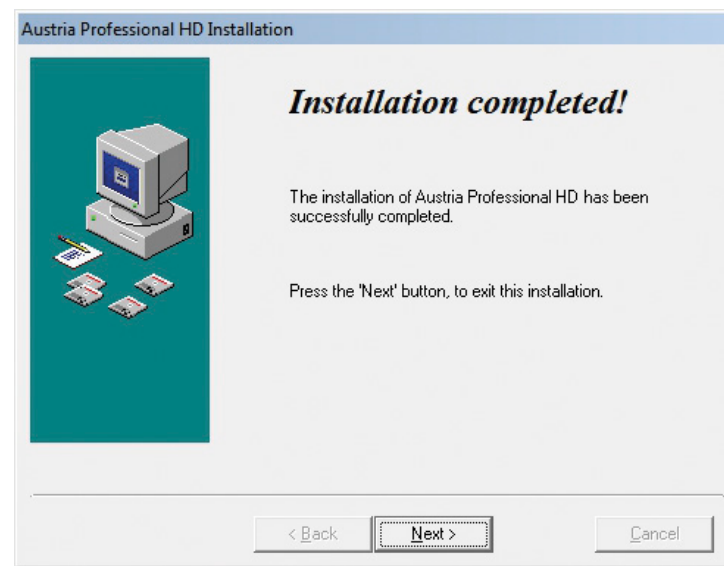
In case the ,continue' button is greyed out / not available you may not have sufficient hard disk space available. Austria Professional HD needs approximately 14GB of hard disk space.

The installation routine is now ready to install the scenery – click ,next' to start the installation.



The required files are now copied on your computer. Depending on your PC's performance this may take a while.

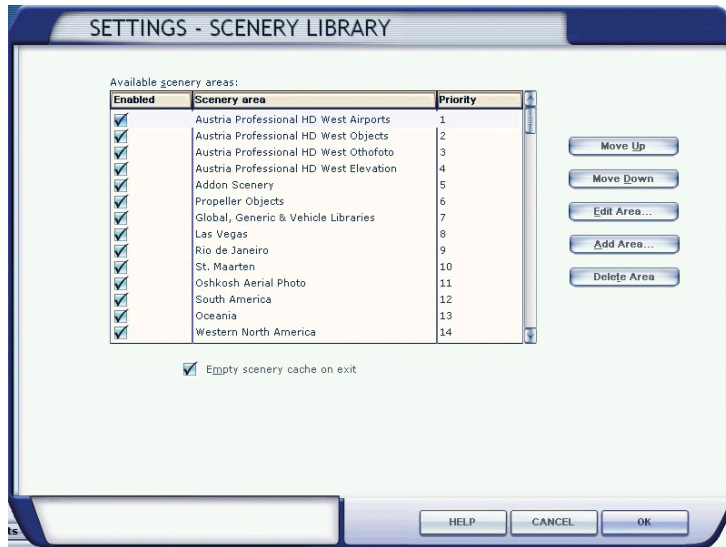
During the installation the routine will ask for another disk. Please open the disk drive and put the selected disk into the disk drive and then click ,next'.



Click on 'next' to finish the installation when all files are copied on your computer and the installation routine indicates that it is done.



To check if the installation was successful you may check your flightsim's scenery library for the following entries:



The first four entries are entries for the installed Austria Professional HD scenery and are supposed to stand on top of the list.

In case you have both parts of AUSTRIA Professional HD East & West please remove existing entries for old AUSTRIA Professional X (if installed).

Compatibility

To represent the vegetation own vegetation-groups were created for this addon. Those are contained in a certain file in the flightsim's folder as indicated by Microsoft.

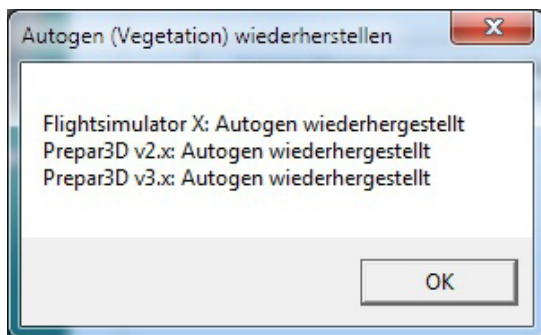
Unfortunately some companies replace this file so that customizations made for this product are lost. You'll recognize this phenomenon by entirely missing trees and other vegetation throughout the scenery.

In this case please start the installation program and move on to the 'Welcome' screen (see page 7). Please click the button 'Options'.

On the next screen 'Repairoptions' please click the button 'Restore Autogen'.



After clicking the button, the Autogen Vegetation Groups are being restored and vegetation should be visible again.



Please click 'OK' to return to the 'Welcome' screen and quit the installation program (complete re-installation is not necessary).

FLY

with the right hardware!



T.Flight Rudder
Pedals



Thrustmaster TWCS
Throttle



Thrustmaster
T.16000M FCS Hotas



Speed Link - PHANTOM
HAWK Flightstick



Speed Link - AIRROW
Flightstick



Speed Link - BLACK
WIDOW Flightstick

Bali Airport



www.aerosoft.com



AEROSOFT®

Balearic Islands X Evolution



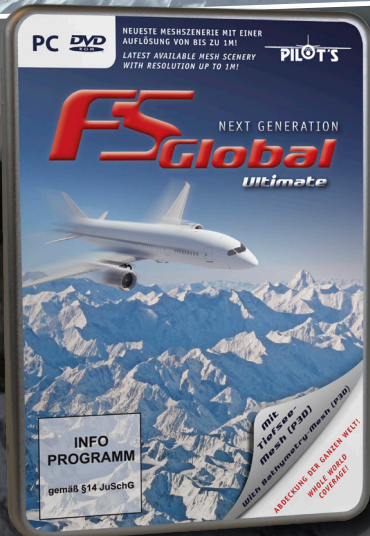
Ready for the island?

including Menorca X Ev. | Ibiza X Ev. | Mallorca X Ev.

PILOT'S



AEROSOFT®



- Completely new development, data from 2016
- Intelligent rendering for best framerates
- New algorithms for sharp edges and mountain ridges
- Resolution up to 1 m

www.aerosoft.com