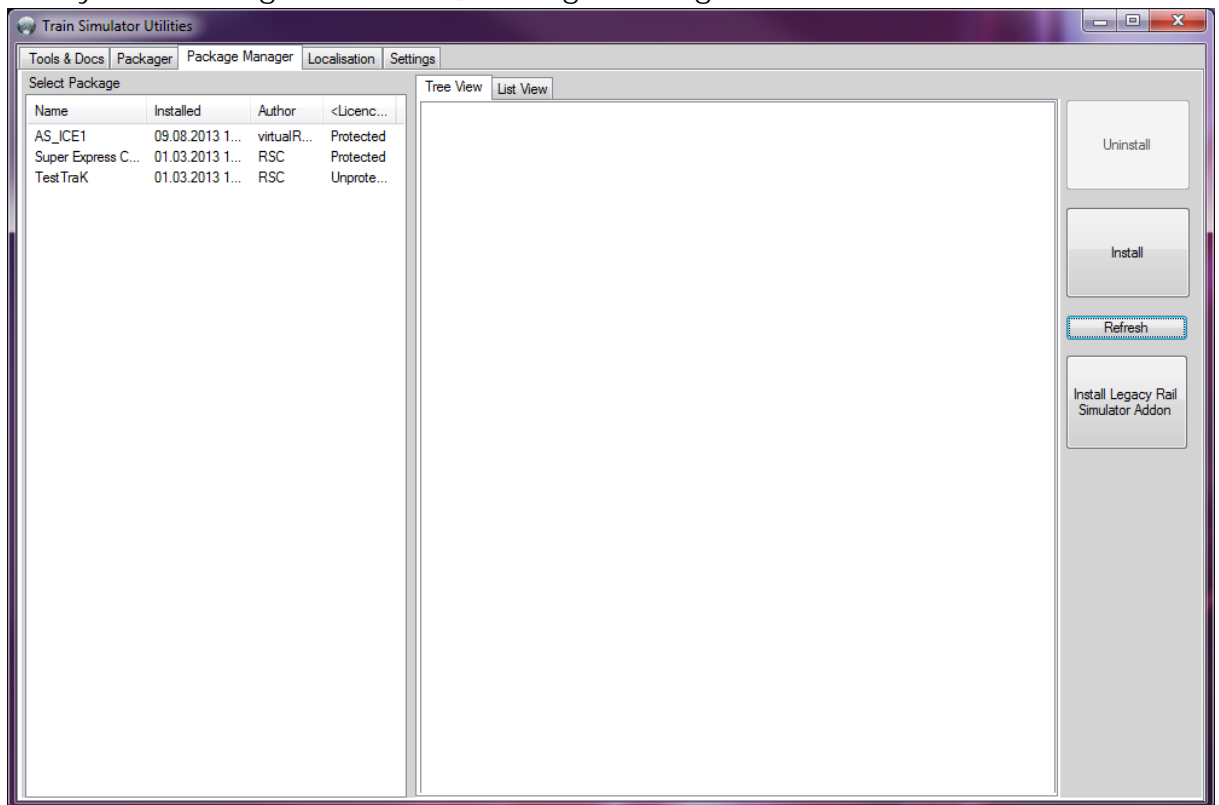


## Installation of the Virtual Railroads - BR120 ORot Apmz Bpmz for the Train Simulator 2014

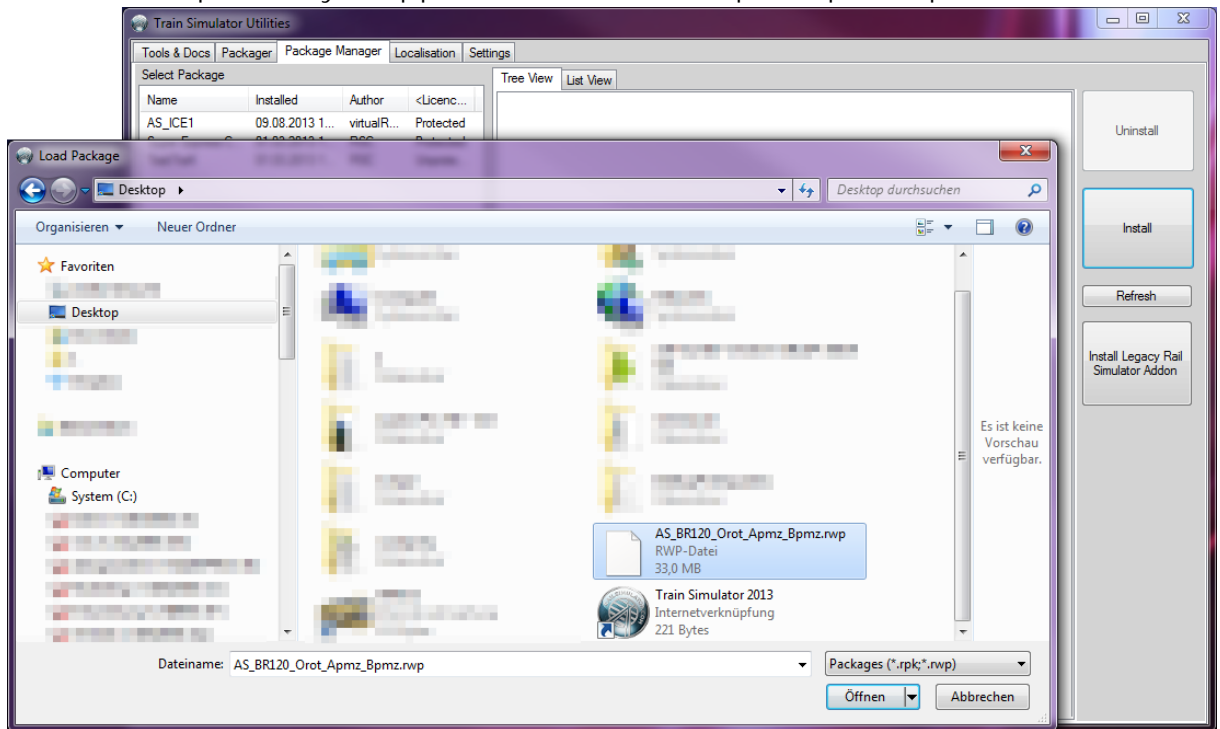
With this download-package you have bought a new add-on for the program Railworks. The installation has two steps. The first step is done while you unzipped the downloaded File and copied the Railworks-file on your Desktop. The installation into Railworks happens in the Package Manager of Railworks. Follow these steps:

1. Start the Utilities.exe which you find in the following directory:  
C:\Program Files (x86)\Steam\SteamApps\common\railworks
2. Then you have to go to the tab „Package Manager“.

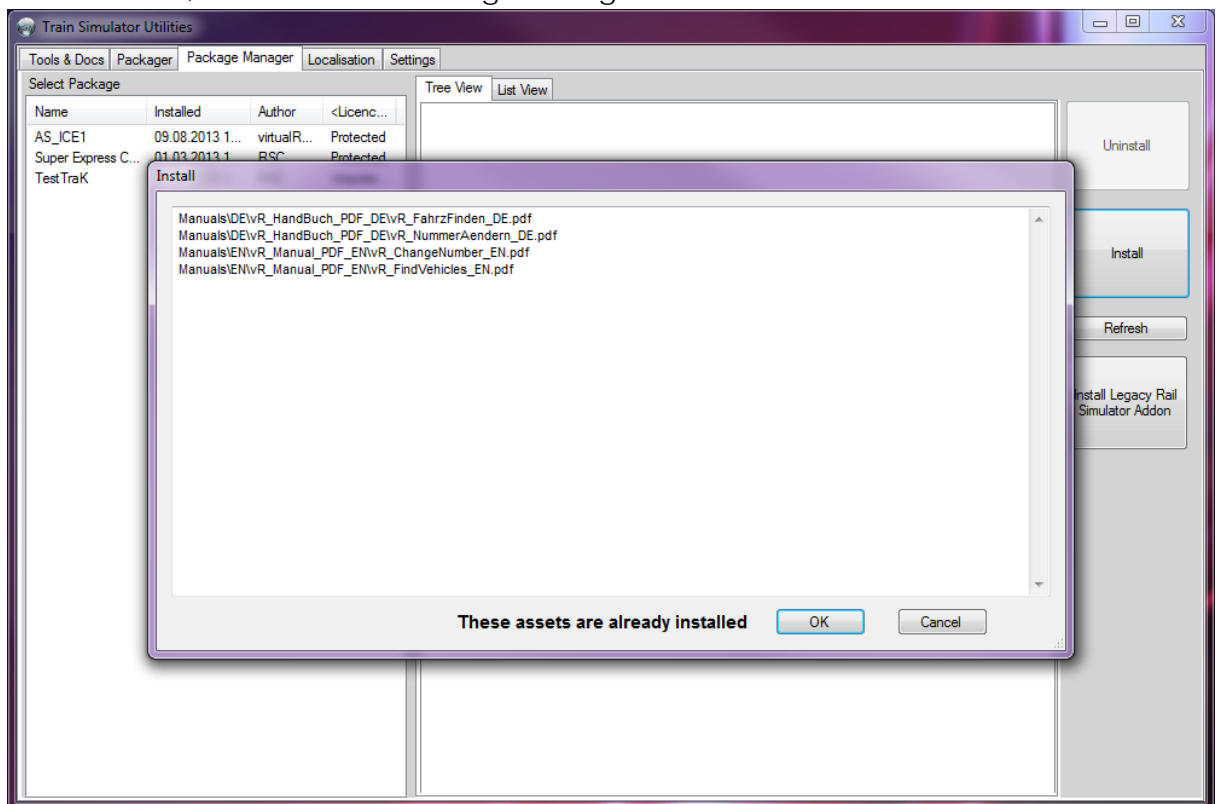


If you don't get the list, just click once on the "Refresh" button, then your installed packages are called.

- By clicking on the "Install" button you can select the file you want to install, in this case, the previously unzipped AS\_BR120\_Orot\_Apmz\_Bpmz.rwp



If that's done, confirm the following message with "OK".



- Now the package will be installed. Once the installation is done, you can use the BR120 Orot Apmz Bpmz in the Train Simulator.